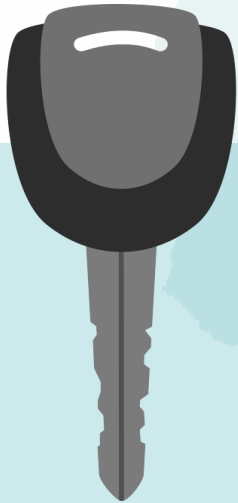


Volunteer Driver Programs

Supporting independence. Promoting access.

Wisconsin's volunteer driver programs provide a statewide network of transportation services for older adults and persons with disabilities.



Volunteer drivers:

- use their own resources to provide public transportation.
- average 67 years old.
- are often the only transportation service available.

Wisconsin has more than:

60 Volunteer Driver Programs.

2,600
Volunteer Drivers.

95% of Wisconsin's older adults and persons with disabilities have access to a Volunteer Driver Program.*

35% of volunteer drivers provide rides to appointments *and* for meal delivery.

A patchwork of Federal, State and local funding supports volunteer driver programs. These programs are effective yet require investment to operate.



Volunteer Driver Programs

Drivers experience barriers to volunteering.

Vehicle insurance issues and low reimbursements rates create issues for Wisconsin's volunteer drivers.

Vehicle Insurance

- In 32% of programs, volunteer drivers experience personal vehicle insurance issues.



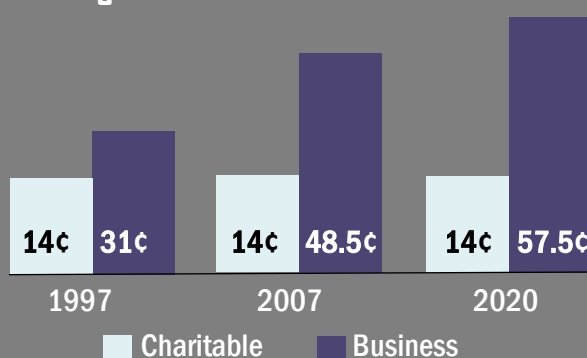
Driver Reimbursement

92%

of volunteer drivers receive mileage reimbursement for driving their own vehicles.



Driving Reimbursement Rates/Mile



Despite the increasing costs to operate a vehicle, the charitable driving reimbursement rate has not been increased in more than 20 years.

*Source: U.S. Census, 2013-17 American Community Survey, Table B18101. Other data from the Greater Wisconsin Agency on Aging Resources, Inc., 2019 Volunteer Driver Program Survey. Graphics from the Noun Project: car insurance by Adrien Coquet, funding by Gregor Cresner.