

**Only add words that are reusable, memorable, and easily navigatable.**

---

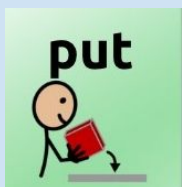
**\$64,000 Question:**

**Should you add content words to AAC devices?**

**Questions to help you decide:**

- **Will the word be used frequently, both now and later?**
- **Does the word relate to a personal interest?**
- **How much navigation is needed to get to the word?**
- **How much memory &/or motor planning is needed?**
- **How much training is required to learn it?**
- **Does that build academic or just motor response skills?**



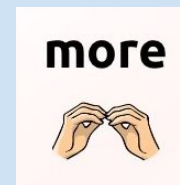
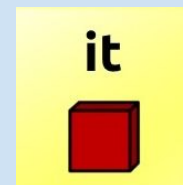


Add fringe words that are:

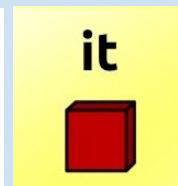
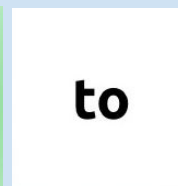
- Memorable: It's a word I know.



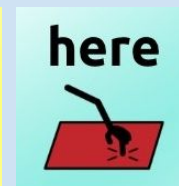
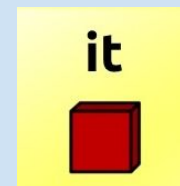
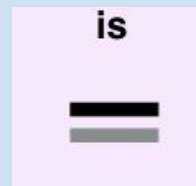
- Reusable: I will say it many times in many places.



- Navigable: It's easy to find on my AAC.



- Word is NOT already in the AAC!



# **\$64,000 Question: Should you add content vocab words to AAC devices?**

**Ideas for students to access content words:**

- **Make a low-tech board w/content vocab**
- **Make a dedicated page on the device for changing 'lesson words'**
- **Ask the student if they want to add it to their device, and where?**
- **Make a personal dictionary of content words**
- **Send home 'lesson letters' with the content words**

**There are lots of ways to give students access to content words!**

